

Before: as the sewer ages it is more liable to leak and collapse.



After: the sewer has been fully lined, with any disruption kept to a minimum.



HOW WILL IT AFFECT YOU?

You can still use water for washing and toilet flushing.

There may be a smell of resin during the work. This is not harmful and is generally short lived, occurring in cellars or low level rooms.

If you experience this smell please open any doors and windows to ventilate the area for several hours, and run water in any sinks and baths, etc, to ensure your traps are fully charged.

Let us know if it persists by calling 0345 600 4 600.

To accommodate equipment there may be some restrictions on parking outside your home for a short period while relining takes place.

If you have any problems with the work we are doing or questions about it, please contact us on 0345 600 4 600.

Should you require more information on the processes and you have access to the internet, please visit wessexwater.co.uk/trenchless

HELP US STOP THE BLOCK



Blockages can cause flooding in your home and pollution in streams, rivers and beaches. So please help us stop the block and only flush the three Ps: paper, poo and pee.

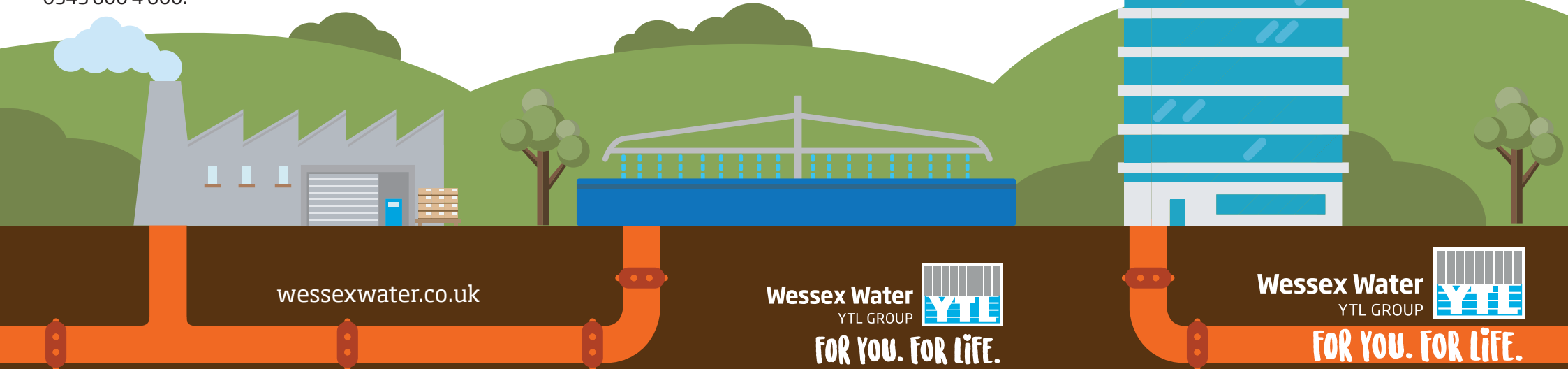
visit wessexwater.co.uk/binit

9015 Designed by Wessex Water design services May 2020 Printed on recycled paper



SEWER RENOVATION

the no-dig way



wessexwater.co.uk

Wessex Water
YTL GROUP 

FOR YOU. FOR LIFE.

Wessex Water
YTL GROUP 

FOR YOU. FOR LIFE.



SEWER RENOVATION

the no-dig way

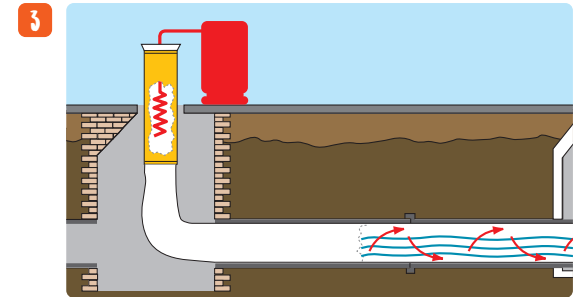
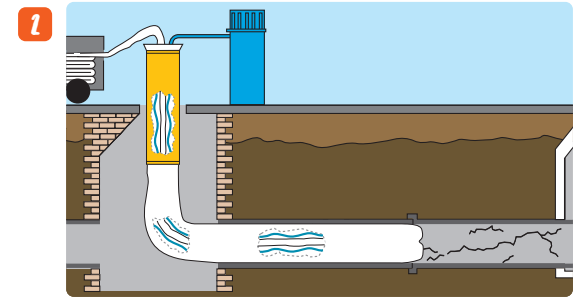
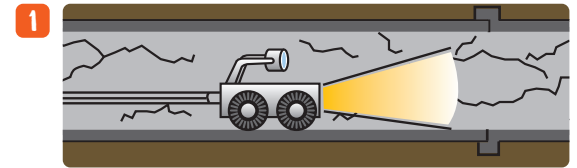
BACKGROUND

Many of our sewers are more than 100 years old and as they age they are more likely to leak and collapse. To avoid this we are repairing and renovating sewers now.

We are using no-dig technology that means we can line the existing pipe, avoiding excavation where we can to reduce any disruption.

HOW DOES IT WORK?

- 1** We inspect and survey the sewer using CCTV to locate areas that require repair.
We use high pressure water jets to clean the sewer walls.
Existing flows through the sewer are pumped away to isolate the section for repair.
- 2** A felt liner, or tube, impregnated with a polyester resin is pushed into the sewer using water pressure, turning the tube inside out and forcing it against the sewer wall..
- 3** The water is heated, hardening the resin and producing a fully lined, tightly fitted sewer repair.
The ends of the liner are removed and robotic cutters open the connections to houses and businesses.



BEFORE

Old, damaged, leaking pipe



AFTER

Lined, sealed pipe

